

Specifications:

Size: 2.375 x 1.75 x 1.0 (W,D,H)

Wiring Standard Unit (6 Pin Connector):

- Orange = +12V (power) must be fused
- Black = Ground
- Violet = Left turn switch input
- Brown = Right turn switch input
- Lt Green = Left turn signal
- Dark Green = Right turn signal

Optional Wiring (2 Pin Connector):

- Gray = Brake Light Output (Optional)
- Red = Brake Light Input (from brake switch)

Connections:

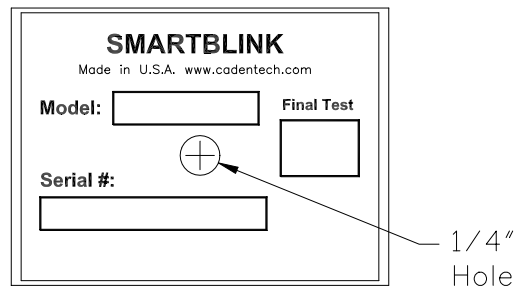
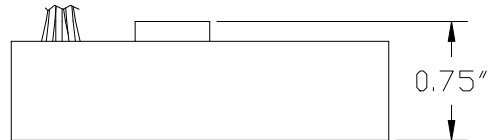
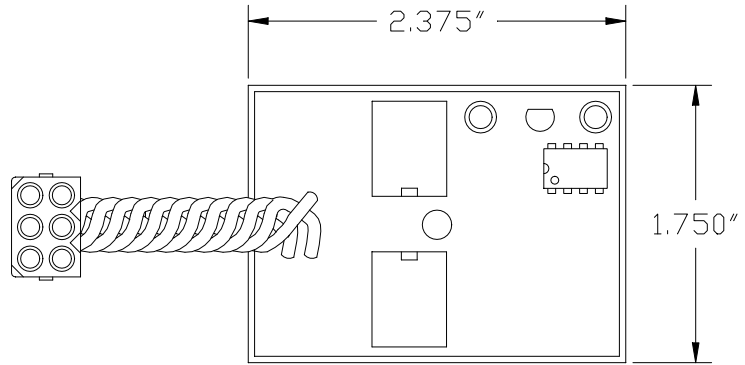
- Standard 6 pin Amp/Molex with female pins
- Optional 2 pin Amp/Molex with female pins

Electrical:

- Input Voltage: 10-15.5VDC (Must be Fused!)
- Input Current (without load): 0.085 Amps
- Output Current (Max.): 8 Amps per channel (non-inductive load)
- Flash Rate: 0.5 Hz Standard - (programmable)
- Note:** Flash rate is constant and independent of the

Environmental:

- Storage Temperature: -20F to 175F
- Operation Temperature: -15F to 175F
- Humidity: 0-100%
- Vibration: 2.5G 2 axis



Note: Optional items are available from the factory at additional cost.

Typical installation and wiring diagram:

